
2.3.1 single rear horn loaded (scoop) bass enclosure

2.3.2

2.3.3

Application -

This design is favoured for its punch, good efficiency, and low frequency extension. An H.F. unit can be added to the 12" and 15" versions to provide a full range cabinet. The 15" and particularly the 18" version are favourites with reggae bass guitarists. These are also suitable as the bass elements of a multi-way system.

Effective Volume -

12" enclosure - 217 litres (7.6 cubic feet).
15" enclosure - 407 litres (14.4 cubic feet).
18" enclosure - 685 litres (24.2 cubic feet).

Loudspeakers -

12" enclosure -

EM 12/100CT full range cone driver

EM 12/100 cone bass driver

EM 12/150 cone bass driver

EM 12/200 cone bass driver

optional - HD 1002 or HD1000 tweeters and
LDX25 crossover

15" enclosure -

EM 15/100 cone bass driver

EM 15/200 cone bass driver

EP 15/200 cone bass driver

EP 15/300 cone bass driver

EP 15/500 cone bass driver

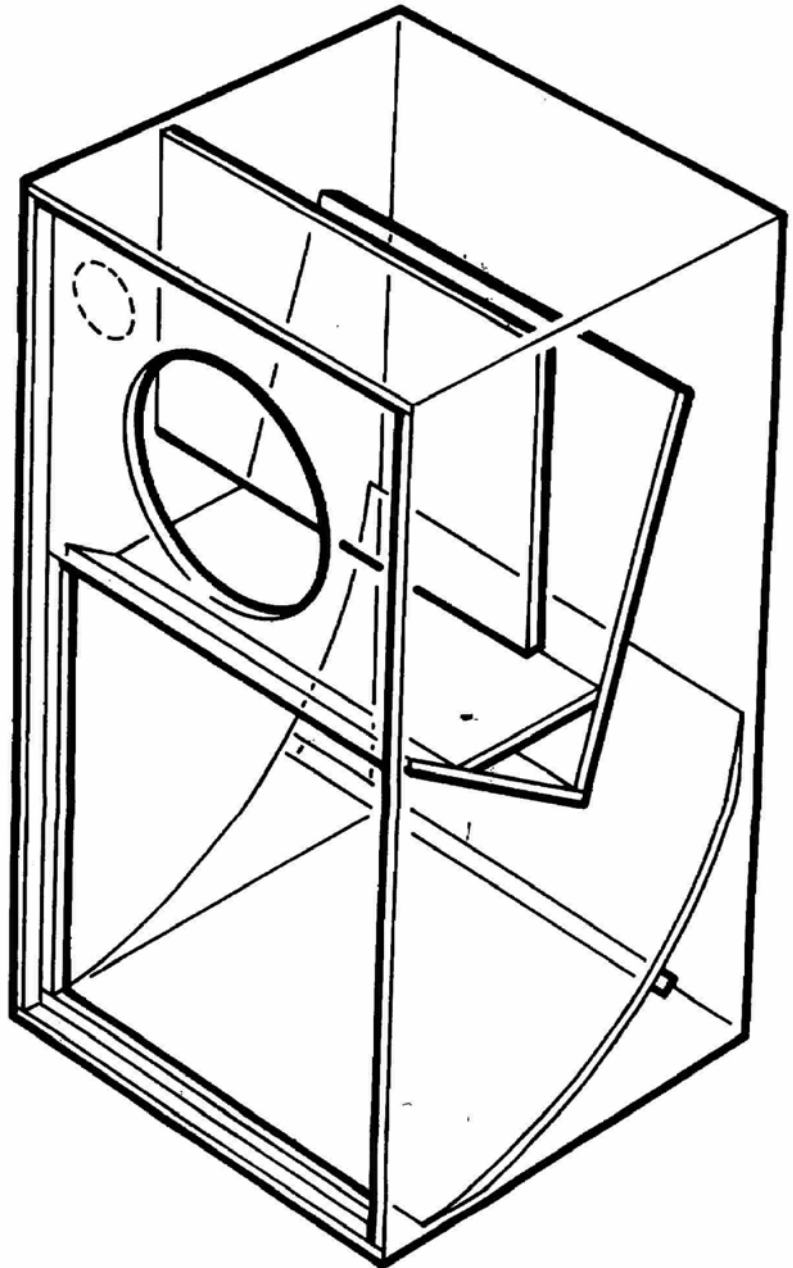
optional - CD 1009 tweeter and LDX25
crossover

18" enclosure -

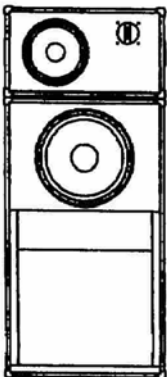
EP 18/300 cone bass driver

EP 18/500 cone bass driver

single rear horn loaded (scoop) bass enclosure

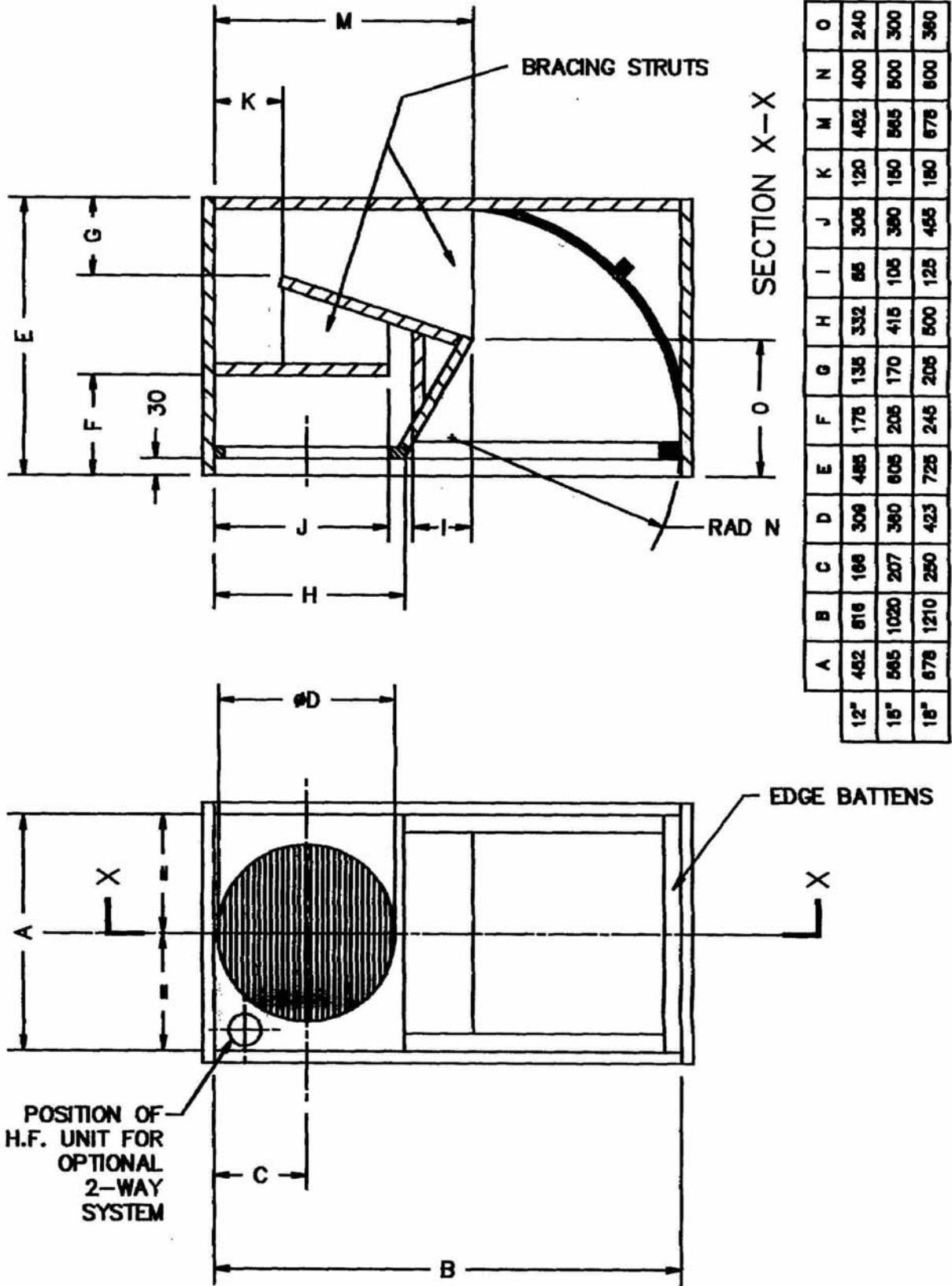


**suggested
use in a
multiway
system**



3-d Illustration

single rear horn loaded (scoop) bass enclosure



mechanical construction

Sheet Material Requirements:

12" enclosure - 1,21m x 2,95m (4.0' x 9.7')

15" enclosure - 1,21m x 3,65m (4.0' x 12.0')

18" enclosure - 1,21m x 5,6m (4.0' x 18.5')

Concise page
from new edition

**single rear horn loaded (scoop)
bass enclosure**

Application

This design is favoured for its punch, good efficiency, and low frequency extension. An H.F. unit can be added to the 12" and 15" versions to provide a full range cabinet. The 15" and particularly the 18" version are favourites with reggae bass guitarists. These are also suitable as the bass elements of a multi-way system.

Effective Volume

- 12" enclosure - 217 litres (7.6 cubic feet)
- 15" enclosure - 407 litres (14.4 cubic feet)
- 18" enclosure - 685 litres (24.2 cubic feet)

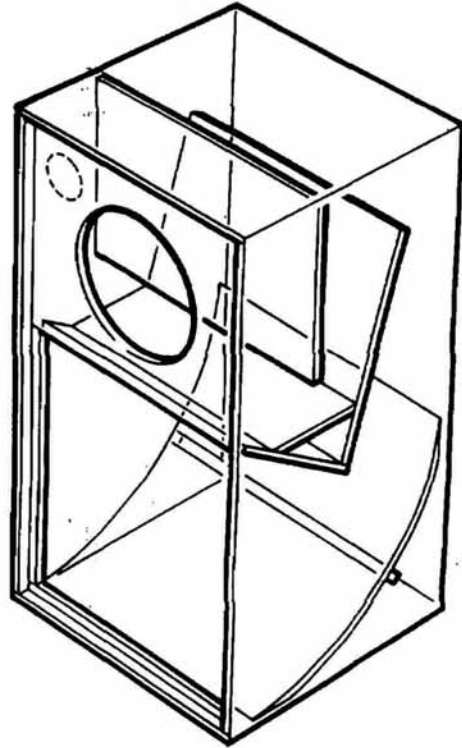
Loudspeakers

12" enclosure:

- ME 12/100LT full range cone driver
- ME 12/100LE cone bass driver
- ME 12/300 cone bass driver
- PS 12/200 cone bass driver
- PS 12/300
- optional: APT80 tweeters and pxi15k0 crossover

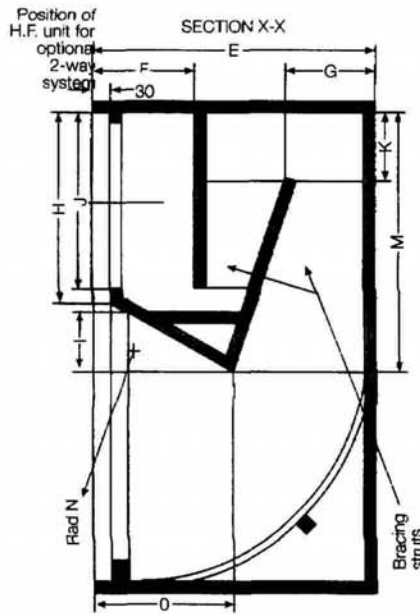
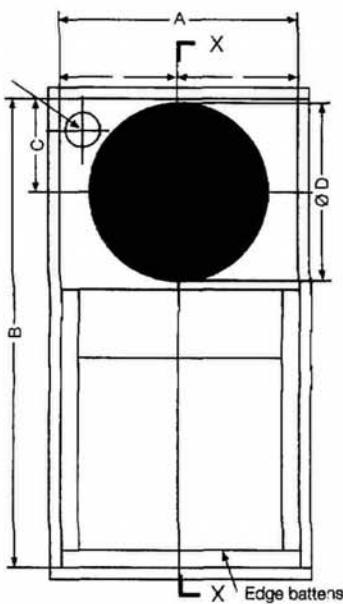
15" enclosure:

- ME 15/100 cone bass driver
- ME 15/200 cone bass driver
- ME 15/200 cone bass driver
- ME 15/300LF cone bass driver
- PS 15/300 cone bass driver
- PS 15/500 cone bass driver
- optional: APT80 tweeter and pxi15k0 crossover



18" enclosure:

- PS 18/400 cone bass driver
- PS 18/600 cone bass driver



Sheet Material Requirements:

- 12" enclosure - 1,21 x 2,95 m (4.0' x 9.7')
- 15" enclosure - 1,21 x 3,65 m (4.0' x 12.0')
- 18" enclosure - 1,21 x 5,60 m (4.0' x 18.5')

| | A | B | C | D | E | F | G | H | I | J | K | M | N | O |
|-----|-----|------|-----|-----|-----|-----|-----|-----|-----|-----|-----|-----|-----|-----|
| 12" | 452 | 816 | 166 | 285 | 485 | 175 | 135 | 332 | 85 | 305 | 120 | 452 | 400 | 240 |
| 15" | 565 | 1020 | 207 | 360 | 605 | 205 | 170 | 415 | 105 | 380 | 150 | 565 | 500 | 300 |
| 18" | 678 | 1210 | 250 | 423 | 725 | 245 | 205 | 500 | 125 | 455 | 180 | 678 | 600 | 360 |

Position of
H.F. unit for
optional
2-way
system

SECTION X-X

